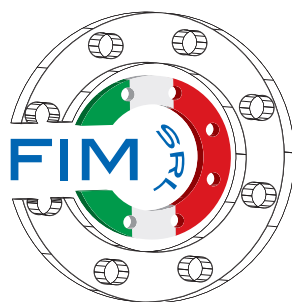
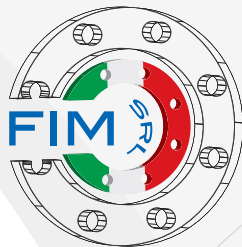


flange piane - flange a saldare - flange a collare - flange filettate - flange cieche



FLANGES ITALIAN MANUFACTURER

flat flanges - solder flanges - flange collar - threaded flanges - blind flanges



FLANGES ITALIAN MANUFACTURER

La FIM srl vanta un'esperienza ventennale nell'ambito delle lavorazioni meccaniche di precisione.

I nostri punti di forza sono l'eccellente qualità dei nostri prodotti, la nostra propensione ad ottenere sempre la soddisfazione del cliente, e la rapidità di evasione delle richieste.

Abbiamo prodotto particolari meccanici di ogni genere su disegno dei clienti, ed ora abbiamo a catalogo la produzione di flange secondo svariati standard e materiali. Effettuiamo anche la produzione di flange speciali secondo le specifiche richieste dei clienti.

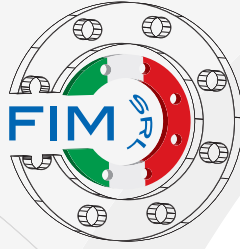
La produzione delle nostre flange è caratterizzata dalla marcatura a laser di ogni singolo particolare, con una numerazione univoca, per poterne sempre avere la tracciabilità e fornire a richiesta i relativi certificati di qualità dei materiali impiegati per la produzione che sono, secondo le nostre politiche aziendali, sempre di provenienza dei migliori produttori europei.

Le flange prodotte vengono inoltre corredate del rapporto dimensionale che, associato al numero univoco, ci permette in qualsiasi momento di fornirne una copia all'utilizzatore finale.

Siamo inoltre in grado di effettuare lavorazioni conto terzi su particolari meccanici di ogni genere, oppure in collaborazione con i clienti possiamo produrre in maniera autonoma tali particolari seguendo gli standard del cliente.

Tipologia di flange:

- flange piane
- flange a saldare
- flange a collare
- flange filettate
- flange cieche



FLANGES ITALIAN MANUFACTURER

The FIM srl has twenty years experience in the field of precision machining .

Our strengths are the excellent quality of our products , our propensity to always achieve customer satisfaction, and speed of processing applications .

We have produced all kinds of mechanical parts on customers' drawings , and now we have to catalog the production of flanges according to various standards and materials. We also carry out the production of special flanges according to customers' specific requirements .

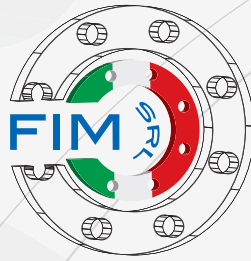
The production of our flange is characterized by the laser marking of every single detail , with a unique number , to be able to always have the traceability and provide on request the relevant certificates of quality of materials used for production are , according to our company policy , also sourced from the best producers in Europe.

The flanges produced are also accompanied by the aspect ratio that is associated with the unique number allows us at any time to provide a copy to the end user .

We can also graph to perform work under contract on mechanical parts of all kinds, or in cooperation with our customers we can produce on their own these particular following the standards of the customer.

Type of flange:

- *flat flanges*
- *solder flanges*
- *have neck flanges in*
- *threaded flanges*
- *blind flanges*



FLANGES ITALIAN MANUFACTURER



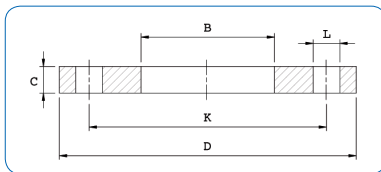
FLANGE EN

PIANE A SALDARE



EN 1092-1/01 type A PN 6

Flange piane a saldare
Welding flat flanges

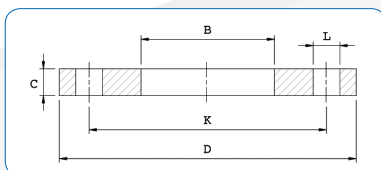


DN	Ø ISO	D	K	L	Holes N.	Bolts	B ISO	C
10	17.2	75	50	11	4	M10	18.0	12
15	21.3	80	55	11	4	M10	22.0	12
20	26.9	90	65	11	4	M10	27.5	14
25	33.7	100	75	11	4	M10	34.5	14
32	42.4	120	90	14	4	M12	43.5	16
40	48.3	130	100	14	4	M12	49.5	16
50	60.3	140	110	14	4	M12	61.5	16
65	76.1	160	130	14	4	M12	77.5	16
80	88.9	190	150	18	4	M16	90.5	18
100	114.3	210	170	18	4	M16	116.0	18
125	139.7	240	200	18	8	M16	141.5	20
150	168.3	265	225	18	8	M16	170.5	20
200	219.1	320	280	18	8	M16	221.5	22
250	273.0	375	335	18	12	M16	276.5	24
300	323.9	440	395	22	12	M20	327.5	24
350	355.6	490	445	22	12	M20	359.5	26
400	406.4	540	495	22	16	M20	411.0	28
450	457.0	595	550	22	16	M20	462.0	30
500	508.0	645	600	22	20	M20	513.5	30
600	610.0	755	705	26	20	M24	616.5	32



EN 1092-1/01 type A PN 10

Flange piane a saldare
Welding flat flanges

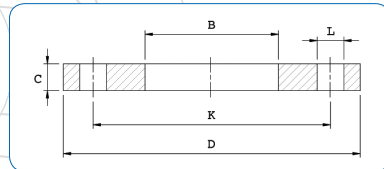


DN	Ø ISO	D	K	L	Holes N.	Bolts	B ISO	C
10÷40								
50÷150								
200	219.1	340	295	22	8	M20	221.5	24
250	273.0	395	350	22	12	M20	276.5	26
300	323.9	445	400	22	12	M20	327.5	26
350	355.6	505	460	22	16	M20	359.5	28
400	406.4	565	515	26	16	M24	411.0	32
450	457.0	615	565	26	20	M24	462.0	36
500	508.0	670	620	26	20	M24	513.5	38
600	610.0	780	725	30	20	M27	616.5	42



EN 1092-1/01 type A PN 16

Flange piano a saldare
Welding flat flanges

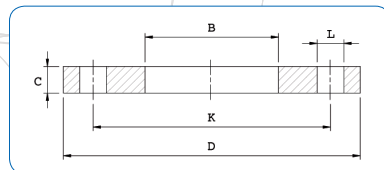


DN	Ø ISO	D	K	L	Holes N.	Bolts	B ISO	C
10÷40	Usare flange EN 1092-1/01 type A PN 40; Use EN 1092-1/01 type A PN 40 flanges							
50	60.3	165	125	18	4	M16	61.5	19
65	76.1	185	145	18	8	M16	77.5	20
80	88.9	200	160	18	8	M16	90.5	20
100	114.3	220	180	18	8	M16	116.0	22
125	139.7	250	210	18	8	M16	141.5	22
150	168.3	285	240	22	8	M20	170.5	24
200	219.1	340	295	22	12	M20	221.5	26
250	273.0	405	355	26	12	M24	276.5	29
300	323.9	460	410	26	12	M24	327.5	32
350	355.6	520	470	26	16	M24	359.0	35
400	406.4	580	525	30	16	M27	411.0	38
450	457.0	640	585	30	20	M27	462.0	42
500	508.0	715	650	33	20	M30	513.5	46
600	610.0	840	770	36	20	M33	616.5	52



EN 1092-1/01 type A PN 25

Flange piano a saldare
Welding flat flanges

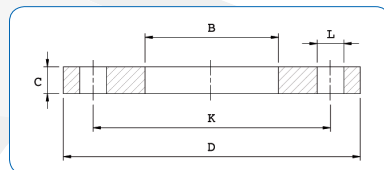


DN	Ø ISO	D	K	L	Holes N.	Bolts	B ISO	C
10÷150	Usare flange EN 1092-1/01 type A PN 40; Use EN 1092-1/01 type A PN 40 flanges							
200	219.1	360	310	26	12	M24	221.5	32
250	273.0	425	370	30	12	M27	276.5	35
300	323.9	485	430	30	16	M27	327.5	38
350	355.6	555	490	33	16	M30	359.5	42
400	406.4	620	550	36	16	M33	411.0	46
450	457.0	670	600	36	20	M33	462.0	50
500	508.0	730	660	36	20	M33	513.5	56
600	610.0	845	770	39	20	M36	616.5	68

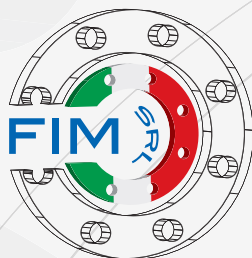


EN 1092-1/01 type A PN 40

Flange piano a saldare
Welding flat flanges



DN	Ø ISO	D	K	L	Holes N.	Bolts	B ISO	C
10	17.2	90	60	14	4	M12	18.0	14
15	21.3	95	65	14	4	M12	22.0	14
20	26.9	105	75	14	4	M12	27.5	16
25	33.7	115	85	14	4	M12	34.5	16
32	42.4	140	100	18	4	M16	43.5	18
40	48.3	150	110	18	4	M16	49.5	18
50	60.3	165	125	18	4	M16	61.5	20
65	76.1	185	145	18	8	M16	77.5	22
80	88.9	200	160	18	8	M16	90.5	24
100	114.3	235	190	22	8	M20	116.0	26
125	139.7	270	220	26	8	M24	141.5	28
150	168.3	300	250	26	8	M24	170.5	30
200	219.1	375	320	30	12	M27	221.5	36
250	273.0	450	385	33	12	M30	276.5	42
300	323.9	515	450	33	16	M30	327.5	48
350	355.6	580	510	36	16	M33	359.5	54
400	406.4	660	585	39	16	M36	411.0	60
450	457.0	685	610	39	20	M36	462.0	66
500	508.0	755	670	42	20	M39	513.5	72
600	610.0	890	795	48	20	M45	616.5	84



FLANGES ITALIAN MANUFACTURER



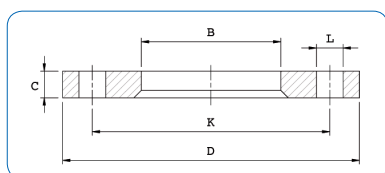
FLANGE EN

PIANE SCORREVOLI



EN 1092-1/02 type A PN 6

Flange piane scorrevoli
Loose flanges

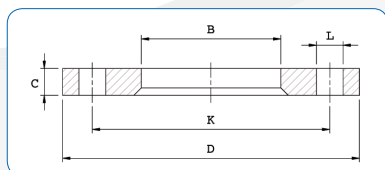


DN	Ø ISO	D	K	L	Holes N.	Bolts	B ISO	C
10	17.2	75	50	11	4	M10	21	12
15	21.3	80	55	11	4	M10	25	12
20	26.9	90	65	11	4	M10	31	14
25	33.7	100	75	11	4	M10	38	14
32	42.4	120	90	14	4	M12	46	16
40	48.3	130	100	14	4	M12	53	16
50	60.3	140	110	14	4	M12	65	16
65	76.1	160	130	14	4	M12	81	16
80	88.9	190	150	18	4	M16	94	18
100	114.3	210	170	18	4	M16	120	18
125	139.7	240	200	18	8	M16	145	20
150	168.3	265	225	18	8	M16	174	20
200	219.1	320	280	18	8	M16	226	22
250	273.0	375	335	18	12	M16	281	24
300	323.9	440	395	22	12	M20	333	24
350	355.6	490	445	22	12	M20	365	26
400	406.4	540	495	22	16	M20	416	28
450	457.0	595	550	22	16	M20	467	30
500	508.0	645	600	22	20	M20	519	30
600	610.0	755	705	26	20	M24	622	32



EN 1092-1/02 type A PN 10

Flange piane scorrevoli
Loose flanges

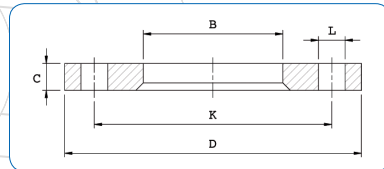


DN	Ø ISO	D	K	L	Holes N.	Bolts	B ISO	C
10÷40								
50÷150								
200	219.1	340	295	22	8	M20	226	24
250	273.0	395	350	22	12	M20	281	26
300	323.9	445	400	22	12	M20	333	26
350	355.6	505	460	22	16	M20	365	28
400	406.4	565	515	26	16	M24	416	32
450	457.0	615	565	26	20	M24	467	36
500	508.0	670	620	26	20	M24	519	38
600	610.0	780	725	30	20	M27	622	42



EN 1092-1/02 type A PN 16

Flange piane scorrevoli Loose flanges

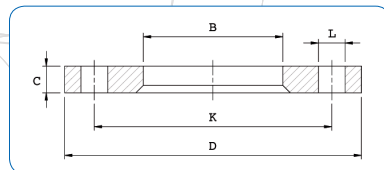


DN	Ø ISO	D	K	L	Holes N.	Bolts	B ISO	C
10÷40	Usare flange EN 1092-1/02 type A PN 40; Use EN 1092-1/02 type A PN 40 flanges							
50	60.3	165	125	18	4	M16	65	19
65	76.1	185	145	18	8	M16	81	20
80	88.9	200	160	18	8	M16	94	20
100	114.3	220	180	18	8	M16	120	22
125	139.7	250	210	18	8	M16	145	22
150	168.3	285	240	22	8	M20	174	24
200	219.1	340	295	22	12	M20	226	26
250	273.0	405	355	26	12	M24	281	29
300	323.9	460	410	26	12	M24	333	32
350	355.6	520	470	26	16	M24	365	35
400	406.4	580	525	30	16	M27	416	38
450	457.0	640	585	30	20	M27	467	42
500	508.0	715	650	33	20	M30	510	46
600	610.0	840	770	36	20	M33	622	52



EN 1092-1/02 type A PN 25

Flange piane scorrevoli Loose flanges

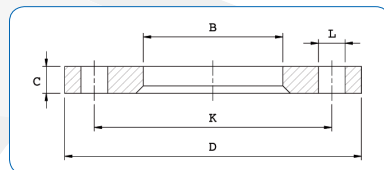


DN	Ø ISO	D	K	L	Holes N.	Bolts	B ISO	C
10÷150	Usare flange EN 1092-1/02 type A PN 40; Use EN 1092-1/02 type A PN 40 flanges							
200	219.1	360	310	26	12	M24	226	32
250	273.0	425	370	30	12	M27	281	35
300	323.9	485	430	30	16	M27	333	38
350	355.6	555	490	33	16	M30	365	42
400	406.4	620	550	36	16	M33	416	46
450	457.0	670	600	36	20	M33	467	50
500	508.0	730	660	36	20	M33	519	56
600	610.0	845	770	39	20	M36	622	68

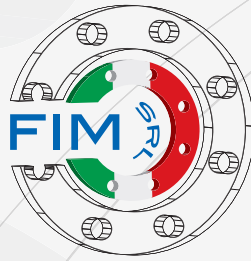


EN 1092-1/02 type A PN 40

Flange piane scorrevoli Loose flanges



DN	Ø ISO	D	K	L	Holes N.	Bolts	B ISO	C
10	17.2	90	60	14	4	M12	21	14
15	21.3	95	65	14	4	M12	25	14
20	26.9	105	75	14	4	M12	31	16
25	33.7	115	85	14	4	M12	38	16
32	42.4	140	100	18	4	M16	47	18
40	48.3	150	110	18	4	M16	53	18
50	60.3	165	125	18	4	M16	65	20
65	76.1	185	145	18	8	M16	81	22
80	88.9	200	160	18	8	M16	94	24
100	114.3	235	190	22	8	M20	120	26
125	139.7	270	220	26	8	M24	145	28
150	168.3	300	250	26	8	M24	174	30
200	219.1	375	320	30	12	M27	226	36
250	273.0	450	385	33	12	M30	281	42
300	323.9	515	450	33	16	M30	333	48
350	355.6	580	510	36	16	M33	365	54
400	406.4	660	585	39	16	M36	416	60
450	457.0	685	610	39	20	M36	467	66
500	508.0	755	670	42	20	M39	519	72
600	610.0	890	795	48	20	M45	622	84



FLANGES ITALIAN MANUFACTURER

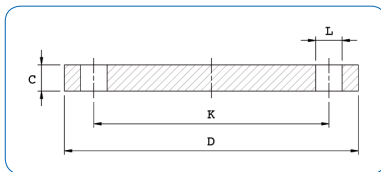


FLANGE EN
CIECHE



EN 1092-1/05 type A PN 6

Flange cieche
Blind flanges

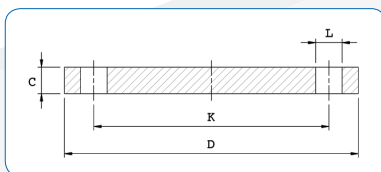


DN	D	K	L	Holes N.	Bolts	C
10	75	50	11	4	M10	12
15	80	55	11	4	M10	12
20	90	65	11	4	M10	14
25	100	75	11	4	M10	14
32	120	90	14	4	M12	14
40	130	100	14	4	M12	14
50	140	110	14	4	M12	14
65	160	130	14	4	M12	14
80	190	150	18	4	M16	16
100	210	170	18	4	M16	16
125	240	200	18	8	M16	18
150	265	225	18	8	M16	18
200	320	280	18	8	M16	20
250	375	335	18	12	M16	22
300	440	395	22	12	M20	22
350	490	445	22	12	M20	22
400	540	495	22	16	M20	22
450	595	550	22	16	M20	24
500	645	600	22	20	M20	24
600	755	705	26	20	M24	30



EN 1092-1/05 type A PN 10

Flange cieche
Blind flanges

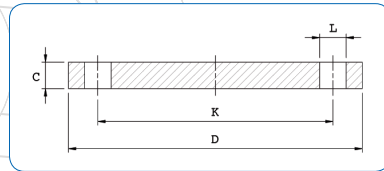


DN	D	K	L	Holes N.	Bolts	C
10÷40 50÷150	Usare flange EN 1092-1/05 type A PN 40; Use EN 1092-1/05 type A PN 40 flanges Usare flange EN 1092-1/05 type A PN 16; Use EN 1092-1/05 type A PN 16 flanges					
200	340	295	22	8	M20	24
250	395	350	22	12	M20	26
300	445	400	22	12	M20	26
350	505	460	22	16	M20	26
400	565	515	26	16	M24	26
450	615	565	26	20	M24	28
500	670	620	26	20	M24	28
600	780	725	30	20	M27	34



EN 1092-1/05 type A PN 16

Flange cieche Blind flanges

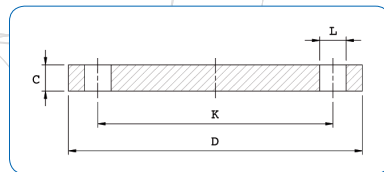


DN	D	K	L	Holes N.	Bolts	C
10÷40	Usare flange EN 1092-1/05 type A PN 40; Use EN 1092-1/05 type A PN 40 flanges					
50	165	125	18	4	M16	18
65	185	145	18	8	M16	18
80	200	160	18	8	M16	20
100	220	180	18	8	M16	20
125	250	210	18	8	M16	22
150	285	240	22	8	M20	22
200	340	295	22	12	M20	24
250	405	355	26	12	M24	26
300	460	410	26	12	M24	28
350	520	470	26	16	M24	30
400	580	525	30	16	M27	32
450	640	585	30	20	M27	40
500	715	650	33	20	M30	44
600	840	770	36	20	M33	54



EN 1092-1/05 type A PN 25

Flange cieche Blind flanges

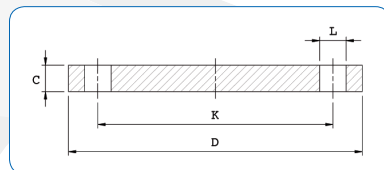


DN	D	K	L	Holes N.	Bolts	C
10÷150	Usare flange EN 1092-1/05 type A PN 40; Use EN 1092-1/05 type A PN 40 flanges					
200	360	310	26	12	M24	30
250	425	370	30	12	M27	32
300	485	430	30	16	M27	34
350	555	490	33	16	M30	38
400	620	550	36	16	M33	40
450	670	600	36	20	M33	46
500	730	660	36	20	M33	48
600	845	770	39	20	M36	58

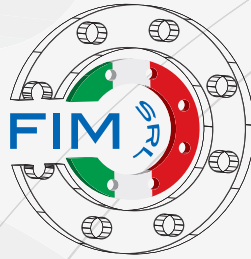


EN 1092-1/05 type A PN 40

Flange cieche Blind flanges



DN	D	K	L	Holes N.	Bolts	C
10	90	60	14	4	M12	16
15	95	65	14	4	M12	16
20	105	75	14	4	M12	18
25	115	85	14	4	M12	18
32	140	100	18	4	M16	18
40	150	110	18	4	M16	18
50	165	125	18	4	M16	20
65	185	145	18	8	M16	22
80	200	160	18	8	M16	24
100	235	190	22	8	M20	24
125	270	220	26	8	M24	26
150	300	250	26	8	M24	28
200	375	320	30	12	M27	36
250	450	385	33	12	M30	38
300	515	450	33	16	M30	42
350	580	510	36	16	M33	46
400	660	585	39	16	M36	50
450	685	610	39	20	M36	57
500	755	670	42	20	M39	57
600	890	795	48	20	M45	72



FLANGES ITALIAN MANUFACTURER



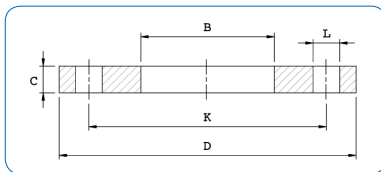
FLANGE UNI

PIANE A SALDARE



UNI 2276-67 PN 6

Flange piane a saldare
Welding flat flanges

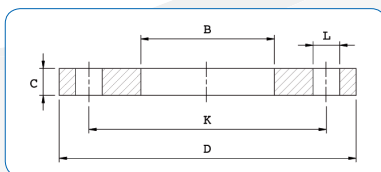


DN	Ø ISO	D	K	L	Holes N.	Bolts	B ISO	C
10	17.2	75	50	11	4	M10	17.5	10
15	21.3	80	55	11	4	M10	22.0	10
20	26.9	90	65	11	4	M10	27.5	12
25	33.7	100	75	11	4	M10	34.0	12
32	42.4	120	90	14	4	M12	43.0	14
40	48.3	130	100	14	4	M12	49.0	14
50	60.3	140	110	14	4	M12	61.5	14
65	76.1	160	130	14	4	M12	77.0	14
80	88.9	190	150	18	4	M16	90.0	16
100	114.3	210	170	18	4	M16	115.5	16
125	139.7	240	200	18	8	M16	141.0	18
150	168.3	265	225	18	8	M16	170.0	20
200	219.1	320	280	18	8	M16	221.0	22
250	273.0	375	335	18	12	M16	275.0	24
300	323.9	440	395	22	12	M20	326.0	24
350	355.6	490	445	22	12	M20	358.0	26
400	406.4	540	495	22	16	M20	409.0	28
450	457.0	595	550	22	16	M20	460.2	28
500	508.0	645	600	22	20	M20	511.0	30
600	610.0	755	705	25	20	M22	613.0	30



UNI 2277-67 PN 10

Flange piane a saldare
Welding flat flanges



DN	Ø ISO	D	K	L	Holes N.	Bolts	B ISO	C
10÷150								
200	219.1	340	295	22	8	M20	221.0	26
250	273.0	395	350	22	12	M20	275.0	28
300	323.9	445	400	22	12	M20	326.0	28
350	355.6	505	460	22	16	M20	358.0	30
400	406.4	565	515	26	16	M24	409.0	32
450	457.0	615	565	26	20	M24	460.2	32
500	508.0	670	620	26	20	M24	511.0	34
600	610.0	780	725	30	20	M27	613.0	36

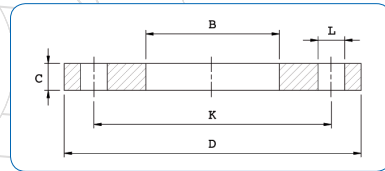
Usare flange UNI 2278-67 PN 16; Use EN 2278-67 PN 16 flanges



UNI 2278-67 PN 16

Flange plane a saldare
Welding flat flanges

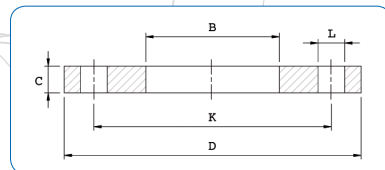
DN	Ø ISO	D	K	L	Holes N.	Bolts	BISO	C
10	17.2	90	60	14	4	M12	17.5	12
15	21.3	95	65	14	4	M12	22.0	12
20	26.9	105	75	14	4	M12	27.5	14
25	33.7	115	85	14	4	M12	34.0	14
32	42.4	140	100	18	4	M16	43.0	16
40	48.3	150	110	18	4	M16	49.0	16
50	60.3	165	125	18	4	M16	61.5	18
65	76.1	185	145	18	4	M16	77.0	18
80	88.9	200	160	18	8	M16	90.0	20
100	114.3	220	180	18	8	M16	115.5	22
125	139.7	250	210	18	8	M16	141.0	24
150	168.3	285	240	22	8	M20	170.0	24
200	219.1	340	295	22	12	M20	221.0	26
250	273.0	405	355	25	12	M22	275.0	32
300	323.9	460	410	25	12	M22	326.0	32
350	355.6	520	470	25	16	M22	358.0	36
400	406.4	580	525	30	16	M27	409.0	38



UNI 6083-67 PN 25

Flange plane a saldare
Welding flat flanges

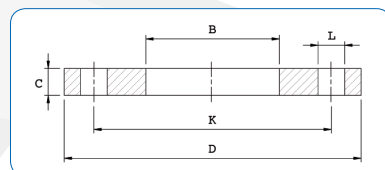
DN	Ø ISO	D	K	L	Holes N.	Bolts	BISO	C
10÷150	Usare flange UNI 6084-67 PN 40; Use UNI 6084-67 PN 40 flanges							
200	219.1	360	310	25	12	M22	221.0	32
250	273.0	425	370	30	12	M27	275.0	36
300	323.9	485	430	30	16	M27	326.0	40
350	355.6	555	490	33	16	M30	358.0	44
400	406.4	620	550	36	16	M33	409.0	48

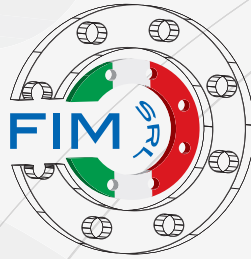


UNI 6084-67 PN 40

Flange plane a saldare
Welding flat flanges

DN	Ø ISO	D	K	L	Holes N.	Bolts	BISO	C
10	17.2	90	60	14	4	M12	17.5	14
15	21.3	95	65	14	4	M12	22.0	14
20	26.9	105	75	14	4	M12	27.5	16
25	33.7	115	85	14	4	M12	34.0	16
32	42.4	140	100	18	4	M16	43.0	18
40	48.3	150	110	18	4	M16	49.0	18
50	60.3	165	125	18	4	M16	61.5	20
65	76.1	185	145	18	8	M16	77.0	24
80	88.9	200	160	18	8	M16	90.0	26
100	114.3	235	190	22	8	M20	115.5	26
125	139.7	270	220	25	8	M22	141.0	28
150	168.3	300	250	25	8	M22	170.0	30
200	219.1	375	320	30	12	M27	221.0	36
250	273.0	450	385	33	12	M30	275.0	44
300	323.9	515	450	33	16	M30	326.0	48
350	355.6	580	510	36	16	M33	358.0	54
400	406.4	660	585	39	16	M36	409.0	60





FLANGES ITALIAN MANUFACTURER

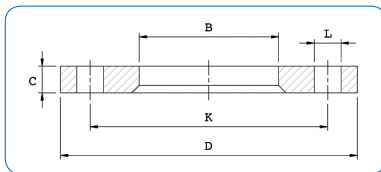


FLANGE UNI
PIANE SCORREVOLI



UNI 6088-67 PN 6

Flange piane scorrevoli
Loose flanges

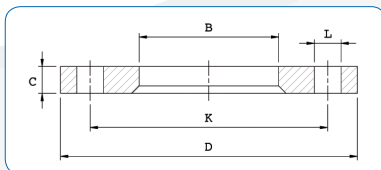


DN	Ø ISO	D	K	L	Holes N.	Bolts	B ISO	C
25	33.7	100	75	11	4	M10	37	12
32	42.4	120	90	14	4	M12	46	12
40	48.3	130	100	14	4	M12	52	12
50	60.3	140	110	14	4	M12	64	12
65	76.1	160	130	14	4	M12	80	12
80	88.9	190	150	18	4	M16	94	14
100	114.3	210	170	18	4	M16	119	14
125	139.7	240	200	18	8	M16	145	14
150	168.3	265	225	18	8	M16	174	14
200	219.1	320	280	18	8	M16	225	18
250	273.0	375	335	18	12	M16	279	20
300	323.9	440	395	22	12	M20	330	24
350	355.6	490	445	22	12	M20	362	26
400	406.4	540	495	22	16	M20	413	28
450	457.0	595	550	22	16	M20	464	30
500	508.0	645	600	22	20	M20	515	32
600	610.0	755	705	25	20	M22	618	36



UNI 6089-67 PN 10

Flange piane scorrevoli
Loose flanges



DN	Ø ISO	D	K	L	Holes N.	Bolts	B ISO	C
25÷150								
200	219.1	340	295	22	8	M20	225	20
250	273.0	395	350	22	12	M20	279	22
300	323.9	445	400	22	12	M20	330	26
350	355.6	505	460	22	16	M20	362	28
400	406.4	565	515	26	16	M22	413	32
450	457.0	615	565	26	20	M22	464	34
500	508.0	670	620	26	20	M22	515	38
600	610.0	780	725	30	20	M27	618	44

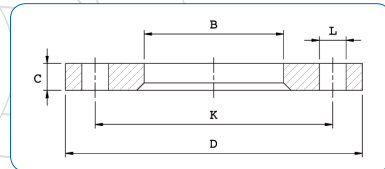
Usare flange UNI 6090-67 PN 16; Use EN 6090-67 PN 16 flanges



UNI 6090-67 PN 16

Flange piano scorrevoli Loose flanges

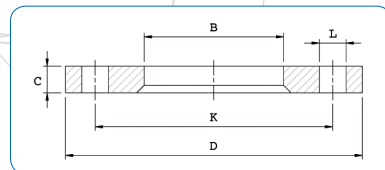
DN	Ø ISO	D	K	L	Holes N.	Bolts	B ISO	C
25	33.7	115	85	14	4	M12	37	16
32	42.4	140	100	18	4	M16	46	16
40	48.3	150	110	18	4	M16	52	16
50	60.3	165	125	18	4	M16	64	16
65	76.1	185	145	18	4	M16	80	16
80	88.9	200	160	18	8	M16	94	18
100	114.3	220	180	18	8	M16	119	18
125	139.7	250	210	18	8	M16	145	18
150	168.3	285	240	22	8	M20	174	18
200	219.1	340	295	22	12	M20	225	20
250	273.0	405	355	25	12	M22	279	24
300	323.9	460	410	25	12	M22	330	28
350	355.6	520	470	25	16	M22	362	32
400	406.4	580	525	30	16	M27	413	36
450	457.0	640	585	30	20	M27	464	40
500	508.0	715	650	33	20	M30	515	44



UNI 2299-67 PN 25

Flange piano scorrevoli Loose flanges

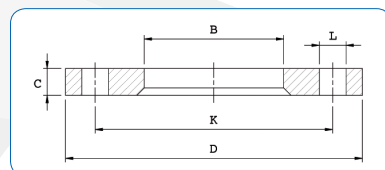
DN	Ø ISO	D	K	L	Holes N.	Bolts	B ISO	C
25÷150	Usare flange UNI 2300-67 PN 40; Use UNI 2300-67 PN 40 flanges							
200	219.1	360	310	25	12	M22	225	26
250	273.0	425	370	30	12	M27	279	30
300	323.9	485	430	30	16	M27	330	34
350	355.6	555	490	33	16	M30	362	38
400	406.4	620	550	36	16	M33	413	42

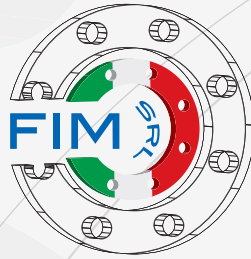


UNI 2300-67 PN 40

Flange piano scorrevoli Loose flanges

DN	Ø ISO	D	K	L	Holes N.	Bolts	B ISO	C
25	33.7	115	85	14	4	M12	37	18
32	42.4	140	100	18	4	M16	46	18
40	48.3	150	110	18	4	M16	52	18
50	60.3	165	125	18	4	M16	64	20
65	76.1	185	145	18	8	M16	80	20
80	88.9	200	160	18	8	M16	94	22
100	114.3	235	190	22	8	M20	119	22
125	139.7	270	220	25	8	M22	145	24
150	168.3	300	250	25	8	M22	174	24
200	219.1	375	320	30	12	M27	225	30
250	273.0	450	385	33	12	M30	279	36
300	323.9	515	450	33	16	M30	330	40
350	355.6	580	510	36	16	M33	362	46
400	406.4	660	585	39	16	M36	413	50





FLANGES ITALIAN MANUFACTURER

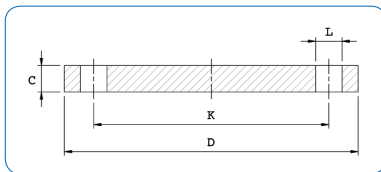


FLANGE UNI
CIECHE



UNI 6091-67 PN 6

Flange cieche
Blind flanges

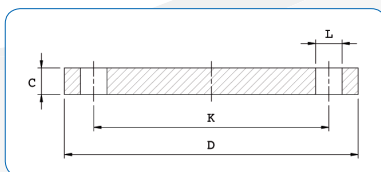


DN	D	K	L	Holes N.	Bolts	C
10	75	50	11	4	M10	12
15	80	55	11	4	M10	12
20	90	65	11	4	M10	14
25	100	75	11	4	M10	14
32	120	90	14	4	M12	14
40	130	100	14	4	M12	14
50	140	110	14	4	M12	14
65	160	130	14	4	M12	14
80	190	150	18	4	M16	16
100	210	170	18	4	M16	16
125	240	200	18	8	M16	18
150	265	225	18	8	M16	18
200	320	280	18	8	M16	20
250	375	335	18	12	M16	22
300	440	395	22	12	M20	22
350	490	445	22	12	M20	22
400	540	495	22	16	M20	22



UNI 6092-67 PN 10

Flange cieche
Blind flanges



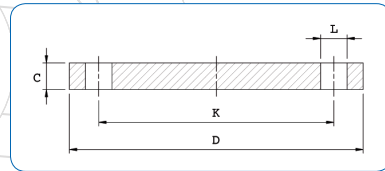
DN	D	K	L	Holes N.	Bolts	C
10÷150	Usare flange UNI 6093-67 PN 16; Use EN 6093-67 PN 16 flanges					
200	340	295	22	8	M20	24
250	395	350	22	12	M20	26
300	445	400	22	12	M20	26
350	505	460	22	16	M20	26
400	565	515	25	16	M22	26



UNI 6093-67 PN 16

Flange cieche
Blind flanges

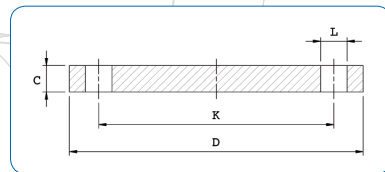
DN	D	K	L	Holes N.	Bolts	C
10	90	60	14	4	M12	14
15	95	65	14	4	M12	14
20	105	75	14	4	M12	16
25	115	85	14	4	M12	16
32	140	100	18	4	M16	16
40	150	110	18	4	M16	16
50	165	125	18	4	M16	18
65	185	145	18	4	M16	18
80	200	160	18	8	M16	20
100	220	180	18	8	M16	20
125	250	210	18	8	M16	22
150	285	240	22	8	M20	22
200	340	295	22	12	M20	24
250	405	355	25	12	M22	26
300	460	410	25	12	M22	28
350	520	470	25	16	M22	30
400	580	525	30	16	M27	32



UNI 6094-67 PN 25

Flange cieche
Blind flanges

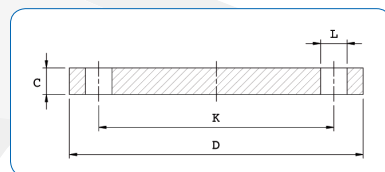
DN	D	K	L	Holes N.	Bolts	C
10÷150	Usare flange UNI 6095-67 PN 40; Use UNI 6095-67 PN 40 flanges					
200	360	310	25	12	M22	30
250	425	370	30	12	M27	32
300	485	430	30	16	M27	34
350	555	490	33	16	M30	38
400	620	550	36	16	M33	40

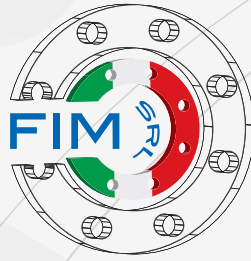


UNI 6095-67 PN 40

Flange cieche
Blind flanges

DN	D	K	L	Holes N.	Bolts	C
10	90	60	14	4	M12	16
15	95	65	14	4	M12	16
20	105	75	14	4	M12	18
25	115	85	14	4	M12	18
32	140	100	18	4	M16	18
40	150	110	18	4	M16	18
50	165	125	18	4	M16	20
65	185	145	18	8	M16	22
80	200	160	18	8	M16	24
100	235	190	22	8	M20	24
125	270	220	25	8	M22	26
150	300	250	25	8	M22	28
200	375	320	30	12	M27	34
250	450	385	33	12	M30	38
300	515	450	33	16	M30	42
350	580	510	36	16	M33	46
400	660	585	39	16	M36	50





FLANGES ITALIAN MANUFACTURER



FLANGE UNI

A COLLARINO A SALDARE DI TESTA

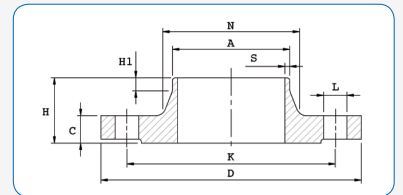


DN	Ø ISO	D	K	L	Holes N.	Bolts	A ISO	C	H	H1	N	S
10	17.2	75	50	11	4	M10	18.0	12	28	6	26	2.3
15	21.3	80	55	11	4	M10	22.5	12	30	6	30	2.5
20	26.9	90	65	11	4	M10	28.0	14	32	6	38	2.5
25	33.7	100	75	11	4	M10	34.5	14	35	6	42	2.8
32	42.4	120	90	14	4	M12	43.5	14	35	6	55	3.0
40	48.3	130	100	14	4	M12	49.5	14	38	7	62	3.0
50	60.3	140	110	14	4	M12	61.5	14	38	8	74	3.5
65	76.1	160	130	14	4	M12	77.0	14	38	9	88	3.5
80	88.9	190	150	18	4	M16	90.0	16	42	10	102	3.7
100	114.3	210	170	18	4	M16	115.5	16	45	10	130	3.7
125	139.7	240	200	18	8	M16	141.0	18	48	10	155	4.0
150	168.3	265	225	18	8	M16	170.5	18	48	12	184	5.0
200	219.1	320	280	18	8	M16	221.0	20	55	15	236	5.0

UNI 2280-67 PN 6

Flange a collarino a saldare di testa con gradino UNI 2229-67

Welding neck flanges



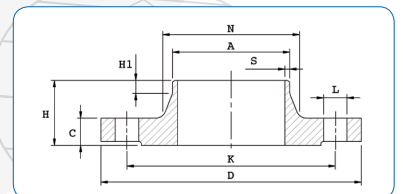
DN	Ø ISO	D	K	L	Holes N.	Bolts	A ISO	C	H	H1	N	S
10-150												
200	219.1	340	295	22	8	M20	221.0	24	62	16	235	5.0

Usare flange UNI 2282-67 PN 16; Use UNI 2282-67 PN 16 flanges

UNI 2281-67 PN 10

Flange a collarino a saldare di testa con gradino UNI 2229-67

Welding neck flanges



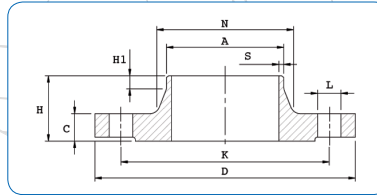


DN	Ø ISO	D	K	L	Holes N.	Bolts	A ISO	C	H	H1	N	S
10	17.2	90	60	14	4	M12	18.0	14	35	6	28	2.3
15	21.3	95	65	14	4	M12	22.5	14	35	6	32	2.5
20	26.9	105	75	14	4	M12	28.0	16	38	6	40	2.5
25	33.7	115	85	14	4	M12	34.5	16	38	6	45	2.8
32	42.4	140	100	18	4	M16	43.5	16	40	6	56	3.0
40	48.3	150	110	18	4	M16	49.5	16	42	7	64	3.0
50	60.3	165	125	18	4	M16	61.5	18	45	8	75	3.5
65	76.1	185	145	18	4	M16	77.0	18	45	10	90	3.5
80	88.9	200	160	18	8	M16	90.0	20	50	10	105	3.7
100	114.3	220	180	18	8	M16	115.5	20	52	12	131	3.7
125	139.7	250	210	18	8	M16	141.0	22	55	12	156	4.0
150	168.3	285	240	22	8	M20	170.5	22	55	12	184	5.0
200	219.1	340	295	22	12	M20	221.0	24	62	16	235	5.0

UNI 2282-67 PN 16

Flange a collarino a saldare di testa con gradino UNI 2229-67

Welding neck flanges



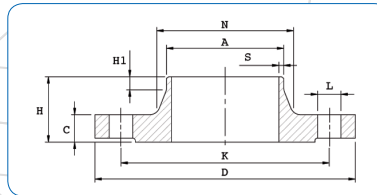
DN	Ø ISO	D	K	L	Holes N.	Bolts	A ISO	C	H	H1	N	S
10÷150												
200	219.1	360	310	25	12	M22	221.0	30	80	16	244	5.0

Usare flange UNI 2284-67 PN 40; Use UNI 2284-67 PN 40 flanges

UNI 2283-67 PN 25

Flange a collarino a saldare di testa con gradino UNI 2229-67

Welding neck flanges

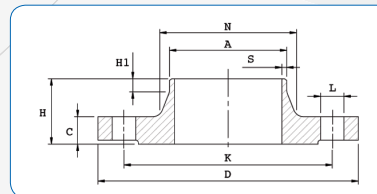


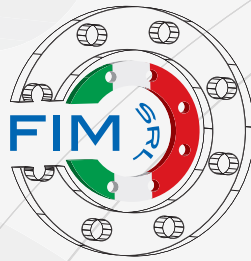
DN	Ø ISO	D	K	L	Holes N.	Bolts	A ISO	C	H	H1	N	S
10	17.2	90	60	14	4	M12	18.0	16	35	6	28	2.3
15	21.3	95	65	14	4	M12	22.5	16	38	6	32	2.5
20	26.9	105	75	14	4	M12	28.0	18	40	6	40	2.5
25	33.7	115	85	14	4	M12	34.5	18	40	6	46	2.8
32	42.4	140	100	18	4	M16	43.5	18	42	6	56	3.0
40	48.3	150	110	18	4	M16	49.5	18	45	7	64	3.0
50	60.3	165	125	18	4	M16	61.5	20	48	8	75	3.5
65	76.1	185	145	18	8	M16	77.0	22	52	10	90	3.5
80	88.9	200	160	18	8	M16	90.0	24	58	12	105	3.7
100	114.3	235	190	22	8	M20	115.5	24	65	12	134	3.7
125	139.7	270	220	25	8	M22	141.0	26	68	12	162	4.0
150	168.3	300	250	25	8	M22	170.5	28	75	12	192	5.0
200	219.1	375	320	30	12	M27	221.0	34	88	16	244	5.5

UNI 2284-67 PN 40

Flange a collarino a saldare di testa con gradino UNI 2229-67

Welding neck flanges





FLANGES ITALIAN MANUFACTURER



**FLANGE UNI
FILETTATE**

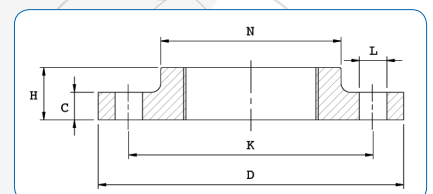


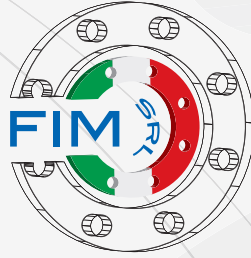
DN	Ø GAS	D	K	L	Holes N.	Bolts		C	H		N	
15	1/2"	95	65	14	4	M12		14	20		35	
20	3/4"	105	75	14	4	M12		16	24		45	
25	1"	115	85	14	4	M12		16	24		52	
32	1"1/4	140	100	18	4	M16		16	26		60	
40	1"1/2	150	110	18	4	M16		16	26		70	
50	2"	165	125	18	4	M16		18	28		85	
65	2"1/2	185	145	18	4	M16		18	32		105	
80	3"	200	160	18	8	M16		20	34		118	
100	4"	220	180	18	8	M16		20	38		140	

UNI 2254-67 PN 16

Flange filettate a collare

Screwed flanges





FLANGES ITALIAN MANUFACTURER



FLANGE DIN

PIANE A SALDARE

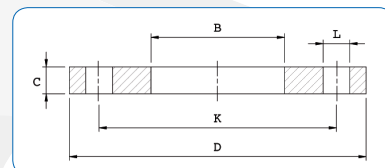
CIECHE

A COLLARINO A SALDARE DI TESTA

DN	Ø ISO	D	K	L	Holes N.	Bolts	B ISO	C
10	17.2	90	60	14	4	M12	17.7	14
15	21.3	95	65	14	4	M12	22.0	14
20	26.9	105	75	14	4	M12	27.6	16
25	33.7	115	85	14	4	M12	34.4	16
32	42.4	140	100	18	4	M16	43.1	16
40	48.3	150	110	18	4	M16	49.0	16
50	60.3	165	125	18	4	M16	61.1	18
65	76.1	185	145	18	4	M16	77.1	18
80	88.9	200	160	18	8	M16	90.3	20
100	114.3	220	180	18	8	M16	115.9	20
125	139.7	250	210	18	8	M16	141.6	22
150	168.3	285	240	22	8	M20	170.5	22
200	219.1	340	295	22	8	M20	221.8	24
250	273.0	395	350	22	12	M20	276.2	26
300	323.9	445	400	22	12	M20	327.6	26
350	355.6	505	460	22	16	M20	359.7	28
400	406.4	565	515	26	16	M24	411.0	32
500	508.0	670	620	26	20	M24	513.6	38

DIN 2576 PN 10

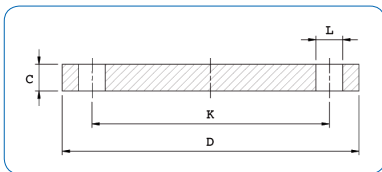
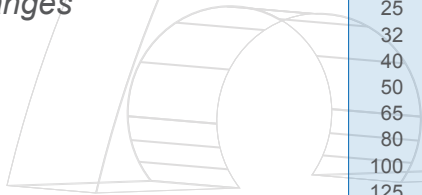
Flange piane a saldare
Welding flat flanges





DIN 2527 PN 10

Flange cieche
Blind flanges



DN	D	K	L	Holes N.	Bolts	C
10	90	60	14	4	M12	14
15	95	65	14	4	M12	14
20	105	75	14	4	M12	16
25	115	85	14	4	M12	16
32	140	100	18	4	M16	16
40	150	110	18	4	M16	16
50	165	125	18	4	M16	18
65	185	145	18	4	M16	18
80	200	160	18	8	M16	20
100	220	180	18	8	M16	20
125	250	210	18	8	M16	22
150	285	240	22	8	M20	22
200	340	295	22	8	M20	24
250	395	350	22	12	M20	26
300	445	400	22	12	M20	26
350	505	460	22	16	M20	26
400	565	515	26	16	M24	26
500	670	620	26	20	M24	28



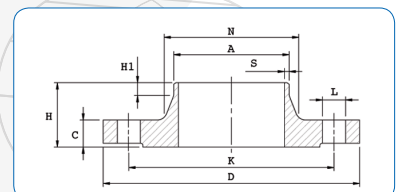
DN	ØISO	D	K	L	Holes N.	Bolts	A ISO	C	H	H1	N	S
10	17.2	90	60	14	4	M12	17.2	14	35	6	28	1.8
15	21.3	95	65	14	4	M12	21.3	14	35	6	32	2.0
20	26.9	105	75	14	4	M12	26.9	16	38	6	40	2.3
25	33.7	115	85	14	4	M12	33.7	16	38	6	45	2.6
32	42.4	140	100	18	4	M16	42.4	16	40	6	56	2.6
40	48.3	150	110	18	4	M16	48.3	16	42	7	64	2.6
50	60.3	165	125	18	4	M16	60.3	18	45	8	75	2.9
65	76.1	185	145	18	4	M16	76.1	18	45	10	90	2.9
80	88.9	200	160	18	8	M16	88.9	20	50	10	105	3.2
100	114.3	220	180	18	8	M16	114.3	20	52	12	131	3.6
125	139.7	250	210	18	8	M16	139.7	22	55	12	156	4.0
150	168.3	285	240	22	8	M20	168.3	22	55	12	184	4.5
200	219.1	340	295	22	12	M20	219.1	24	62	16	235	5.9



DIN 2633 PN 16

Flange a collarino a saldare di testa

Welding neck flanges

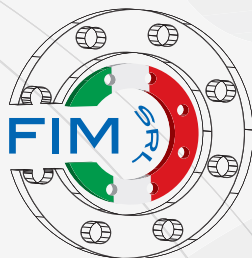


FLANGE RIBASSATE

PIANE A SALDARE

PIANE SCORREVOLI

CIECHE

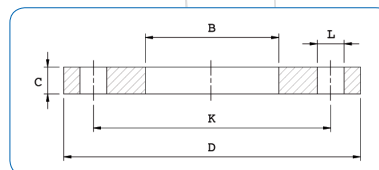


FLANGES ITALIAN MANUFACTURER

DN	Ø ISO	D	K	L	Holes N.	Bolts	B ISO	C
15÷150								
Usare flange PN 16; Use PN 16 flanges								
200	219.1	340	295	22	8	M20	221.0	16
250	273.0	395	350	22	12	M20	275.0	18
300	323.9	445	400	22	12	M20	326.0	18
350	355.6	505	460	22	16	M20	358.0	18
400	406.4	565	515	25	16	M22	409.0	20
450	457.0	615	565	25	20	M22	460.2	20
500	508.0	670	620	25	20	M22	511.0	20
600	610.0	780	725	30	20	M27	613.0	20



Flange piane a saldare
Welding flat flanges

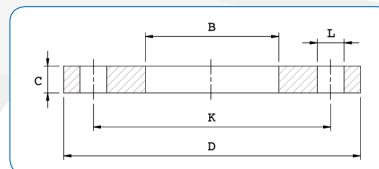


Dimensioni per accoppiamenti secondo norma UNI 2223-67 PN 10
Dimensions according to UNI 2223-67 PN 10 specifications

DN	Ø ISO	D	K	L	Holes N.	Bolts	B ISO	C
15	21.3	95	65	14	4	M12	22.0	10
20	26.9	105	75	14	4	M12	27.5	10
25	33.7	115	85	14	4	M12	34.0	10
32	42.4	140	100	18	4	M16	43.0	12
40	48.3	150	110	18	4	M16	49.0	12
50	60.3	165	125	18	4	M16	61.5	12
65	76.1	185	145	18	4	M16	77.0	12
80	88.9	200	160	18	8	M16	90.0	14
100	114.3	220	180	18	8	M16	115.5	14
125	139.7	250	210	18	8	M16	141.0	16
150	168.3	285	240	22	8	M20	170.0	16
200	219.1	340	295	22	12	M20	221.0	16
250	273.0	405	355	25	12	M22	275.0	18
300	323.9	460	410	25	12	M22	326.0	18
350	355.6	520	470	25	16	M22	358.0	18
400	406.4	580	525	30	16	M27	409.0	20



Flange piane a saldare
Welding flat flanges

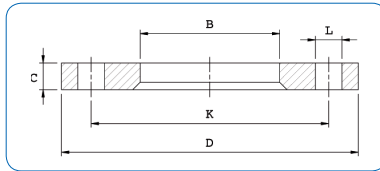


Dimensioni per accoppiamenti secondo norma UNI 2223-67 PN 16
Dimensions according to UNI 2223-67 PN 16 specifications

FLANGE RIBASSATE



Flange piane scorrevoli
Loose flanges



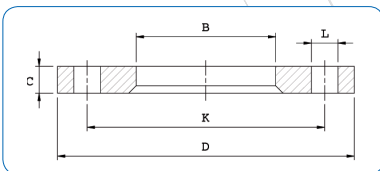
DN	Ø ISO	D	K	L	Holes N.	Bolts	B ISO	C
25÷150	Usare flange PN 16; Use PN 16 flanges							
200	219.1	340	295	22	8	M20	225	16
250	273.0	395	350	22	12	M20	279	18
300	323.9	445	400	22	12	M20	330	18
350	355.6	505	460	22	16	M20	362	18
400	406.4	565	515	25	16	M22	413	20
450	457.0	615	565	25	20	M22	464	20
500	508.0	670	620	25	20	M22	515	20
600	610.0	780	725	30	20	M27	618	25

Dimensioni per accoppiamenti secondo norma UNI 2223-67 PN 10
Dimensions according to UNI 2223-67 PN 10 specifications

FLANGE RIBASSATE



Flange piane scorrevoli
Loose flanges

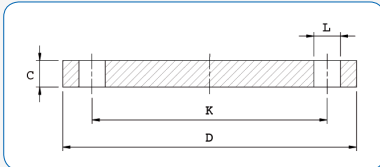


DN	Ø ISO	D	K	L	Holes N.	Bolts	B ISO	C
25	33.7	115	85	14	4	M12	37	10
32	42.4	140	100	18	4	M16	46	12
40	48.3	150	110	18	4	M16	52	12
50	60.3	165	125	18	4	M16	64	12
65	76.1	185	145	18	4	M16	80	12
80	88.9	200	160	18	8	M16	94	14
100	114.3	220	180	18	8	M16	119	14
125	139.7	250	210	18	8	M16	145	16
150	168.3	285	240	22	8	M20	174	16
200	219.1	340	295	22	12	M20	225	16
250	273.0	405	355	25	12	M22	279	18
300	323.9	460	410	25	12	M22	330	18
350	355.6	520	470	25	16	M22	362	18
400	406.4	580	525	30	16	M27	413	20
450	457.0	640	585	30	20	M27	464	20
500	508.0	715	650	33	20	M30	515	20

Dimensioni per accoppiamenti secondo norma UNI 2223-67 PN 16
Dimensions according to UNI 2223-67 PN 16 specifications



UNI 2229-67 *Blind flanges*
Flange cieche con gradino



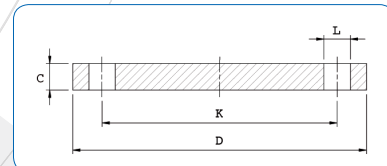
DN	D	K	L	Holes N.	Bolts	C
15+150						
200	340	295	22	8	M20	16
250	395	350	22	12	M20	18
300	445	400	22	12	M20	18
350	505	460	22	16	M20	18
400	565	515	25	16	M22	20

Usare flange PN 16; Use PN 16 flanges

Dimensioni per accoppiamenti secondo norma UNI 2223-67 PN 10
Dimensions according to UNI 2223-67 PN 10 specifications

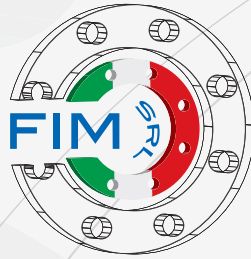
DN	D	K	L	Holes N.	Bolts	C
15	95	65	14	4	M12	10
20	105	75	14	4	M12	10
25	115	85	14	4	M12	10
32	140	100	18	4	M16	12
40	150	110	18	4	M16	12
50	165	125	18	4	M16	12
65	185	145	18	4	M16	12
80	200	160	18	8	M16	14
100	220	180	18	8	M16	14
125	250	210	18	8	M16	16
150	285	240	22	8	M20	16
200	340	295	22	12	M20	16
250	405	355	25	12	M22	18
300	460	410	25	12	M22	18
350	520	470	25	16	M22	18
400	580	525	30	16	M27	20

Blind flanges **UNI 2229-67**
Flange cieche con gradino



Dimensioni per accoppiamenti secondo norma UNI 2223-67 PN 16
Dimensions according to UNI 2223-67 PN 16 specifications





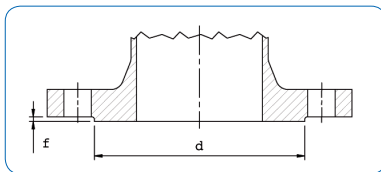
FLANGES ITALIAN MANUFACTURER

TENUTA A GRADINO PER FLANGE



EN 1092-1 type B

Tenuta a gradino per flange
Raised face for flanges

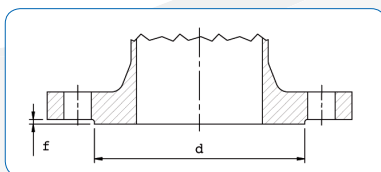


DN	f	d						
		PN 6	PN 10	PN 16	PN 25	PN 40		
10	2	35	40	40	40	40		
15	2	40	45	45	45	45		
20	2	50	58	58	58	58		
25	2	60	68	68	68	68		
32	2	70	78	78	78	78		
40	2	80	88	88	88	88		
50	2	90	102	102	102	102		
65	2	110	122	122	122	122		
80	2	128	138	138	138	138		
100	2	148	158	158	162	162		
125	2	178	188	188	188	188		
150	2	202	212	212	218	218		
200	2	258	268	268	278	285		
250	2	312	320	320	335	345		
300	2	365	370	378	395	410		
350	2	415	430	438	450	465		
400	2	465	482	490	505	535		
450	2	520	532	550	555	560		
500	2	570	585	610	615	615		
600	2	670	685	725	720	735		

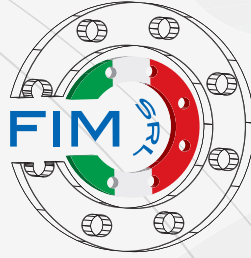
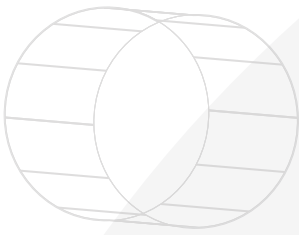


UNI 2229-67

Tenuta a gradino per flange
Raised face for flanges



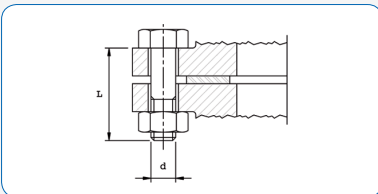
DN	f	d						
		PN 6	PN 10	PN 16	PN 25	PN 40		
10	2	35	40	40	40	40		
15	2	40	45	45	45	45		
20	2	50	58	58	58	58		
25	2	60	68	68	68	68		
32	2	70	78	78	78	78		
40	3	80	88	88	88	88		
50	3	90	102	102	102	102		
65	3	110	122	122	122	122		
80	3	128	138	138	138	138		
100	3	148	158	158	162	162		
125	3	178	188	188	188	188		
150	3	202	212	212	218	218		
200	3	258	268	268	278	285		
250	3	312	320	320	335	345		
300	4	365	370	378	395	410		
350	4	415	430	438	450	465		
400	4	465	482	490	505	535		
450	4	520	532	550	555	560		
500	4	570	585	610	615	615		
600	5	670	685	725	720	735		



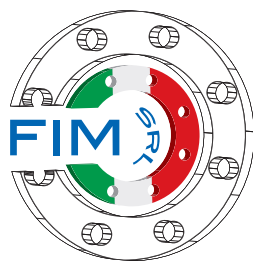
FLANGES ITALIAN MANUFACTURER

BULLONI PER FLANGE

Bulloni per flange
Bolts for flanges



DN	PN 6			PN 10			PN 16			PN 25			PN 40		
	N°	d	L	N°	d	L	N°	d	L	N°	d	L	N°	d	L
10	4	10	40	4	12	50	4	12	50	4	12	50	4	12	50
15	4	10	40	4	12	50	4	12	50	4	12	50	4	12	50
20	4	10	45	4	12	50	4	12	50	4	12	55	4	12	55
25	4	10	45	4	12	50	4	12	50	4	12	55	4	12	55
32	4	12	45	4	16	60	4	16	60	4	16	60	4	16	60
40	4	12	45	4	16	60	4	16	60	4	16	60	4	16	60
50	4	12	45	4	16	60	4	16	60	4	16	65	4	16	65
65	4	12	45	4	16	60	4	16	60	8	16	70	8	16	70
80	4	16	60	4	16	65	8	16	65	8	16	70	8	16	70
100	4	16	60	8	16	65	8	16	65	8	20	75	8	20	80
125	8	16	65	8	16	70	8	16	70	8	22	80	8	22	80
150	8	16	65	8	20	75	8	20	75	8	22	90	8	22	90
200	8	16	70	8	20	80	12	20	80	12	22	90	12	27	100
250	12	16	70	12	20	85	12	24	90	12	27	100	12	30	110
300	12	20	75	12	20	85	12	24	90	16	27	100	16	30	120
350	12	20	80	16	20	85	16	24	95	16	30	110	16	33	130
400	16	20	80	16	22	85	16	27	105	16	33	120	16	36	140
450	16	20	80	20	22	85	20	27	105	20	33	120	20	36	140
500	20	20	80	20	22	90	20	30	110	20	33	120	20	39	150
600	20	22	85	20	27	95	20	33	115	20	36	140	20	45	170



FLANGES ITALIAN MANUFACTURER